



DISTINGUISHED POST AWARD RECIPIENT

The Society of American Military Engineers

GREATER KANSAS CITY POST
KANSAS CITY, MISSOURI

"Proud Heritage - Promising Future"

Vol. 14 No.1
February / March 2003

Officers

President	COL Donald Curtis
Vice President	Juan A. Uribe
Secretary	Frank Bader
Treasurer	Cliff Cate

Board of Directors

LTC Gary Heer	
Gerald Adams	Connie Cook
Robert Skach	Bill Zaner
Tom Poer	William Singleton
Vernon Reid	Arl Altman
Phil Dula	Bryant Kroutch

Post Chaplain Larry Myers

Sustaining Members

- AllState Specialty Construction, Inc.
- Argus Consulting Inc.
- Arrowhead Contracting, Inc.
- The Austin Company
- ASE Group
- ARCADIS
- Barr Engineering Co.
- Bay West, Inc.
- BEM Systems
- BG Consultants, Inc.
- BHE Environment, Inc.
- Bibb & Associates, Inc.
- Black & Veatch
- Bucher Willis & Ratliff Corp.
- Burns & McDonnell Engineering Co.
- EA Engineering, Science, & Tech, Inc.
- CDM Federal Programs Corp.
- CAPE Environment Mngmt., Inc.
- Conti Environmental, Inc.
- Dynamac Corp
- Earth Tech, Inc.
- Ecology & Environment, Inc.
- Environmental Chemical Corp.
- EMR, Inc.
- EnviroBate Global
- Environmental Quality Management Inc.
- Environmental Solutions & Resources, Inc.
- FMSM Engineers
- George Butler Associates, Inc.
- Grisham Grading and Excavating
- Hanson Professional Service, Inc.
- Harding ESE
- Haz-Mat Response, Inc./Waste Express
- HDR Engineering, Inc.
- HNTB Corporation
- Horner & Shifrin, Inc.
- HydroGeoLogic, Inc.
- IHP Industrial Inc.
- Innovative Technical Solutions, Inc.
- Jacobs Engineering Group Inc.
- JE Dunn
- Kingston Environmental Services
- Mason & Hanger Group Inc.
- Massman Construction Co.
- Maxim Technologies
- McKinzie Construction
- ME Group
- Michael Baker Corp.
- Micropact Engineering, Inc.
- Midwest Environmental Consultants
- Olsson Associates
- Pangea Group
- Paragon Business Solutions
- Plexus Scientific Corporation
- Professional Environmental Engineers, Inc.
- SAIC
- Severn Trent Labs
- Shafer Kline, & Warren, Inc.
- Stanley Consultants, Inc.
- TapanAm Associates, Inc.
- Tetra Tech, Inc.
- Tran Systems Corp.
- URS
- Walter P. Moore and Associates
- World Environmental
- Zambrana Engineering, Inc.

Upcoming General Membership Meetings

February Meeting

Please join the Greater KC Post as we conduct a joint meeting with the American Public Works Association (APWA). Our featured speaker will be Bob Dimmitt, Project Manager for the Missouri River Levee System L-385. Bob graduated from the renowned University of Missouri at Rolla Campus. Bob has enjoyed a 31 year career at the US Army Corps of Engineers where he has worked in the geotechnical area and as a Project Manager. Bob's presentation will provide us with an update on the details and status of this important project. One professional development hour (PDH) will be given for attending this event.

Date: February 27, 2003

Time: 11:30 - Social/Registration • 11:45 - Lunch • Program to follow

Place: Argosy Casino, 777 N.W. Argosy Parkway, Kansas City, MO

Menu: Chicken Parmesan, Herb Roasted Potatoes, Salad, Rolls, Dessert (please indicate your preference on dessert when you place your reservation: French Silk or Lemon Creme Cake)

Cost: \$15.00

RSVP: Michelle Mahoney by 2/24/03, fx: 816-472-4086; ph: 816-527-2348; mmahoney@hntb.com

2003 Meetings Preview

Presently LTC Gary Heer, Chairman of our Programs Committee, is planning our 2003 Programs Schedule and has tentatively retained the following guest speakers. Please reserve these 2003 dates as you will not want to miss any of these meetings. Meeting details will be provided via mailings the Post web page and upcoming issues of the newsletter

March 27 Luncheon Meeting - Guest Speaker Joe Hughes, USACE KC District Regulatory Program

April 17 Tri-Meeting - SAME/MSPE (host)/KSPE Dinner, Speaker TBA

May 22 Luncheon Meeting and Tour - Guest Speaker Bob Lowy, Overland Park Convention Center

June 26 Luncheon Meeting - Change of Post Leadership and Award of 2003 Scholarships

July 24 Luncheon Meeting - Homeland Security/Emergency Management State of Kansas



KU Student Post Followup

by Sean McKee, Student Post President

The next Student Post meetings have been scheduled for February 20 and March 26 at 6:00 pm at the Military Science Building, Room 105, on the campus of the University of Kansas. (*Go Jayhawks!*)



The KU Post meets monthly at the Military Science Building at the University of Kansas.

Message from the President. . .

It's been a busy couple of months for the Post. We now have a revised Post Constitution and Bylaws with minor changes to keep pace with contemporary practices. The check is now in the bank from hosting the National Convention and we're beginning to do strategic planning on how to best use those precious resources to ensure the Post remains viable for many years to come.



Don Curtis, COL
Post President

We're attempting to attract new members through a series of programs. Once again our Professional Engineering Refresher Course participation is high, with many officers from the Command & General Staff College at Ft. Leavenworth taking part. It benefits them professionally and they have taken part in some of our monthly meetings — a good thing. Our Student Chapter has a record number of members being introduced to the Society and once again it is scholarship and Summer Camp time. These programs provide opportunities to advance interest in engineering and SAME.

If you have the time, please attend our monthly meetings. We work hard to make the programs both fun and informative. If you have a good idea for a program, we want to hear from you.

Once again, it is a pleasure to serve as your Post President.

Don Curtis, COL, Post President

Donald.R.Curtis.COL@nwk02.usace.army.mil

SAME Young Members Update

- **Joint Social Hour, March 6**--The Young Members group will be hosting a joint social hour with the Kansas Society of Professional Engineers on March 6th from 5-7 pm at the Blue Moose Bar & Grill located at 4160 W. 71st Street in Prairie Village. Although this is a Young Members event, everyone is welcome to attend. Please RSVP to Matt Metcalf (mmetcalf@hntb.com) if you plan to attend.
- **Upcoming Professional Society Open House**--The Young Members committee is working on putting on a professional society open house later this year to encourage young people from both the private and public sectors to get involved with a society. Details to follow.
- **Volunteers Assist with Mathcounts Competition**--SAME had several volunteers assist with the 2003 Mathcounts competition which was held at the Jewish Community Center. Over 170 students from 24 schools participated in the event.

Treasurer's Report

Following is a summary of the Post's funds and account statuses for the period of January 7, 2003 to February 13, 2003. *Note: this report has not been approved by the SAME KC Post Board*

Operating Fund:

Balance = \$ 3,730.39 UMB
Net Change = -\$69.40

Merrill Lynch Fund: (Scholarship & Future Operating Fund)

\$39,230.67 Principal
\$ 6,942.51 Accrued Earnings (Cash)
\$46,173.18

KC SAME Post Upcoming 2003 Meetings

Meetings are tentatively scheduled for the 4th Thursday, with the exception of those that conflict with holidays or guest speaker schedules. Mark your 2003 calendars now:

February 27	June 26	October 23
March 27	July 24	November 20
April 17	August 28	December 18
May 22	September 25	

WASTE EXPRESSsm
By
HAZ-MAT Response Disposal, Inc.sm

MONICA BAKER
EXTENSION 428

BUSINESS 816-924-5884 6300 STADIUM DRIVE
WATTS 888-429-9278 KANSAS CITY, MISSOURI
FAX 816-924-1453 64129

Please Help Us Maintain the Post Database

Please submit address changes to Bill Koski at koskiwa@cdm.com to help us maintain current membership information. You can also update your personal information on the Post's website at www.same.org/kansascity/

SAME Newsletter, Greater Kansas City Post

President: COL Donald Curtis • **Secretary:** Frank Bader

NEWSLETTER EDITOR

Phil Dula, Bay West, Inc.
ph: 913/663-2915 • fx: 913/663-3067
phild@baywest.com • www.baywest.com
10620 Widmer Road, Lenexa, KS 66215

Apr/May Issue Deadline for Submittals: April 16, 2003

This newsletter is issued every other month. We are currently accepting project writeups, members in the news, and job opportunities for our next publication. Please email your entry to Phil Dula (see information above) or Lori Hintz (ph: 651/291-3436 or lorih@baywest.com).

General Membership Meeting Followups

December Meeting Followup

by Phil Dula. Bay West, Inc.

Our final meeting of 2002 was held at Cascone's Restaurant on December 19. Our featured speaker was long time supporter of our Post, Past Post President, regular contributor to our newsletter, and SAME Fellow, Steve Whitfield. Steve has been assigned for the past two years as Project Engineer Representative for Burns & McDonnell for a major Everglades restoration project and provided his enlightening and entertaining presentation on the status of this project. Steve's presentation provided a wealth of information from the history of the Everglades, its geology, hydrogeology, ecology, and the impact of anthropogenic activities such as land development, groundwater demands, farming, and dewatering of the Everglades. Burns and McDonnell is one of several firms involved with the restoration of the Everglades. Hopefully the projects underway will preserve the remaining Everglades



Bill Koski, CDM, (left) presents new sustaining member firm Certificate of Appreciation to Greg Butler, BEM Systems, Inc.

area as the important resource and ecological system it represents. Steve also incorporated several amusing stories from this project, as well as sharing several fossil and flora specimens from the project site. Thanks to Steve for a great presentation.

Presentations were made to New Sustaining Member Firms BEK Systems and Michael Baker Corporation. Thank you for supporting the Greater Kansas City Post. Since September 2002, six firms have joined our Post as Sustaining Members. These firms are: ME Group, Inc., JE Dunn Construction, Envirobate Global, Michael Baker Corporation/Michael Baker Jr. Inc., BEM Systems, and FMSM Engineers.



Bill Koski, CDM, (left) presents new sustaining member firm Certificate of Appreciation to George Lytwynshyn, Michael Baker, Corp.

January Vice President's Dinner Followup

by Phil Dula. Bay West, Inc.

Our January meeting was the annual Vice President's Dinner. What a great evening for the 26 Post members that were able to attend. Thanks to Juan and Colleen for planning and hosting this wonderful event. The Vice President's Dinner was held at the New Theater Restaurant on January 23. We enjoyed a gourmet dinner followed by a very funny play that added up to a great night out!

Richard Kline starred in the entertaining and hilarious production of *Caught in the Net*. He is probably best known for his character Larry, John Ritter's neighbor on the hit 1970's comedy *Three's Company*, where Kline played a car salesman and swinging bachelor. This time he plays a crazy border who gets caught in the middle of this zany venture.

The story revolved around John Smith, played by John Korinke, a New York taxi driver, who has had a happy life with wife Mary for 20 years in Queens and an equally happy life for 18 years in Brooklyn with wife Barbara. That is until John and Mary's teenage son and John and Barbara's teenage daughter accidentally log onto each other on the internet - to their amazement, their fathers appear to have a lot in common, and they decide to meet. When John discovers they are to meet, chaos ensues in his attempts to keep them apart. Richard Kline played Stanley, John's long time border and friend who tries his hardest to preserve John's 18-year double duty lifestyle. Naturally, his position in the middle of this mess leads to some great comedic moments. Cathy Barnett and Lisa Winegar-Cole played the two wives and Tom Picasso and Hayley Podschun played the children. Addison Myers played Stanley's slightly demented dad. This high-energy production kept all in attendance in stitches.

Attention Greater Kansas City Post Sustaining Members!

USACE Kansas City, Omaha, and Tulsa Districts Briefing, February 20th

All Sustaining Members are invited to hear the PROGRAM briefs/updates for Kansas City, Omaha, and Tulsa Districts Army Corps of Engineers. The District Engineer or District Deputy, of each District, will be sharing their view of their programs with you.

The briefings will be starting about 15 minutes after the end of the Annual Engineers Week Luncheon, 20 February 2003. The briefings will be held in the J. McShan Room, 3rd floor of the new Marriott downtown at approximately 2:15 pm.

On Station in the Everglades

by Steve Whitfield

(Steve is a Resident Representative for Burns & McDonnell on a project to restore the Florida Everglades, and transferred from Burns & McDonnell's Kansas City Office to Florida. As a former Kansas City Post President and active Board member, Steve has been keeping us updated on his new endeavors.)



Death in the Everglades

January 7, 2003--A second dead body turned up on our project site last weekend. This one was a female, estimated to be in her twenties, and dead about two weeks. She was found by a hunter, approximately 200 feet west of Highway 27, the road that borders the project site for about 5 miles along its eastern edge. The fact that the body was under some bushes, apparently protected it from buzzards and alligators.

It made me think about death out here. We see a lot of it, from the human toll on the highway to the animal and reptile road kills; the dead snake carried off by a vulture, or the squirming fish firmly clutched in the talons of the hawk. The first human body on our project turned up last month, on a remote levee that was being cleared of overgrowth. The bones were wrapped in canvas and plastic, in a neat package. The coroner estimated it had been there for about two years; about the time we began this project. Makes me wonder how many more are out here that have not been found.

Highway 27, which runs alongside the eastern boundary of the project, is a notorious killer. The road runs from

Miami to the south end of Lake Okeechobee and further north, and is used principally by over-the-road haulers. Tractor trailers file steadily north and south carrying manufactured goods, vegetables and raw materials, such as gravel, harvested sugar cane and sod for the lawns of new developments to the south and west. The speed limit is supposed to be 65 mph on this four-lane, divided highway, but few adhere to it. The road has numerous crossovers and turnouts where drivers rest from long hauls. Visibility is frequently impacted by fog, smoke from cane harvesting or wildfires, and torrential rains.

Running alongside the highway is the very deep North New River Canal. Many drivers fall asleep at the wheel and, if they go into the canal they usually drown, unable to get out of the sunken vehicle. Often, riding the road on the way to or from work, new tracks are apparent crossing the median, going through a missing, or newly replaced, section of guardrail; through the Australian Pine trees lining the canal, and disappearing into the canal. Trailer trucks on fire, SUVs on their roofs after having rolled over, and loads of material scattered into the swampy areas along the highway,

mark the spot of yet another tragedy. We have only had one fatality on the job, which occurred when a worker drove directly into the path of a tractor trailer while trying to cross a traffic lane without looking. But the

highway between South Bay and I-75/Alligator Alley has seen a dozen or more deaths since we began working here about two years ago. The roadsides bear many crosses, often with plastic flowers, as homemade monuments to mark the end of someone's life.

We have two native varieties of vulture. They are the black vulture, with black head, and the American Vulture, with a red head. They are here in great numbers, lazily circling overhead, sitting on spoil piles or perched in dead trees. Occasionally they are seen ripping and tearing at some fresh, or old road-killed creature. Raccoons and turtles, the occasional alligator that tries to cross the highway and meets a speeding vehicle, and the birds that don't seem to notice vehicles while they are chasing mosquitoes at certain times of the year. The snakes take a beating on the farm roads and when the cane is burned before harvest, the birds and vultures have a real feast. Cattle egrets, storks, and ibis' know just where to wait. They line up in ranks on the downwind side of fields being burned to snatch up critters running or slithering before the flames. American egrets and great blue herons can often be found near pump outfalls, where they pick off fish and crawfish passed through the pumps. When the big pump stations operate, alligators gather at the downstream end to gather easy meals of confused fish.

In spite of all the death out here, the Everglades are a lively, renewable resource. The incredible life present and constantly on display, renews the spirit and adds to the determination to preserve this wonderful treasure for future generations. Just be careful on that darned highway!

February 10, 2003--February now and weather turning warmer. Thank goodness! Those 60-degree mornings



Leading the industry in engineering, environmental, and construction services, including:

- ▶ Homeland Defense
- ▶ Environmental Assessment & Remediation
- ▶ Geotechnical Investigations
- ▶ Civil Engineering

10975 El Monte, Suite 100
Overland Park, KS 66211
Phone: 913-344-1000
Fax: 913-344-1011

WWW.URSCORP.COM

and 70-degree afternoons we had in the 'winter' were almost unbearably cold. Had to wear a long sleeve shirt for awhile there.

Had our final inspection by FDOT on the highway bridges. Somehow one of the pilings had a crack in it that will have to be repaired. They want a jacket and pressure-injected grout for the fix. Have not figured out how it happened.

Have basically finished the first canal widening and levee building job. Asphalt paving at the canal bridge occurred last Friday. Guard rails remain to be installed, along with construction of an airboat ramp, some regrading and finish hydroseeding. The paving took place at the same time and location as the first 54-cy concrete pour to build newly shaped intake bays on a 45-year-old Corps of Engineers pump station. The changes are designed to eliminate cavitation erosion. Asphalt trucks, concrete trucks, concrete pumper, roller and various other equipment successfully shared a very small area. Both contractors had been reminded numerous times about coordinating their activities, and still they scheduled significant activities at the same time and place. Some things never change.

Our 970-cfs vertical pumps have been delivered for the two new pump stations. That is, six of the seven are here while one is back in the shop in Alabama to determine what can be salvaged. Each pump weighs 25 tons and required a huge separate trailer. Cradles were not built and each pump was chained to its trailer. In Alabama, one of the pumps rolled off its trailer, mashed a concrete median barrier and came to rest in the northbound lanes of an interstate highway. Fortunately, no one was hurt but it caused a major tie up on the highway for hours while two very large cranes were mobilized. The bell will have to be rebuilt and it should soon be determined whether the vanes can be salvaged. Meanwhile, steel framing of the pump buildings is progressing rapidly, so depending on the delay, part of one of the stations may have to be left out until the missing pump can be delivered.

Tomorrow we go to the Bahamas for a few days on a mini-vacation. Need a break.
To be continued.....

HDR
One Main Plaza Building
4435 Main Street, Suite 1000
Kansas City, Missouri 64111
816.360.2700

Woodlands Plaza IV
11775 Borman Drive, Suite 320
St. Louis, Missouri 63146
314.810.1000
www.hdrinc.com

- ▶ Transportation
- ▶ Water and Wastewater
- ▶ Environmental Resource Management
- ▶ Management Consulting
- ▶ Design-Build

HDR ONE COMPANY | Many Solutions

Brain Teaser

Question: A certain golf course had nine holes, 300, 250, 200, 325, 275, 350, 225, 375 and 400 yards apart.

If a man could always strike the ball in a perfectly straight line and send it exactly one of two distances, so that it would either go towards the hole, pass over it, or drop into it, what would the two distances be that would carry him in the least number of strokes round the whole course?

Two very good distances are 125 and 75, which carry you round in twenty-eight strokes, but this is not the correct answer.

Check your answer on Page 7.

Spring 2003 P.E. Refresher Course by Tom Poer, HNTB

The KC Post sponsored 22 participants in the P.E. Refresher Course for the spring 2003 session. The course is available to all members of the local engineering community taking the NCEES Professional Engineering Exam. This spring, the Post continued the teaming arrangement with the University of Missouri and sponsored 14 individuals in the online course for civil engineers. New to the program is the sponsorship of the University of Kansas' live course. The live course started off with 6 individuals sponsored while others received textbook reim-

bursments or attended the kick-off meeting. This program encouraged 15 individuals to join the Greater KC Post this spring!

The refresher course participants for the spring session are listed below. Please wish them good luck on the test! For information on the upcoming fall session, see the Post Web Site at

www.same.org/kansascity/PEFrame.htm or contact Tom Poer at (816) 527-2357, tpoer@hntb.com.

HYDRO Geologic INC.

ALBANY, NY
ATLANTA, GA
AUSTIN, TX
DENVER, CO
HERNDON, VA
KNOXVILLE, TN

OVERLAND PARK, KS
PHOENIX, AZ
RICHLAND, WA
SACRAMENTO, CA
SAN ANTONIO, TX
TUCSON, AZ

Providing Environmental and Remediation Services to Our Clients Nationwide

8595 COLLEGE BOULEVARD, SUITE 110
OVERLAND PARK, KS 66210
TEL: (913) 317-8860 ♦ FAX: (913) 317-8868 ♦ www.hgl.com

Sustaining Member Companies in the News

Pangea Inc. is an 8a-certified contractor, with offices in St. Louis, Kansas City, O'Fallon, Illinois and Wichita providing environmental remediation, civil and facility construction, facility operations and maintenance, and environmental, health and safety services. At the end of December 2002, Pangea reached a milestone of exemplary performance by completing two years with zero lost workdays. Since January 2001, Pangea employees have accumulated nearly 300,000 hours without experiencing a lost time injury. Only two OSHA recordable cases have occurred during this period.

Other achievements of Pangea's safety record include:

- In May 2001, Pangea was accepted into the St. Louis Construction Industry "PRIDE" Partnership Program, a consortium of construction industry management and labor organizations and the St. Louis OSHA office. Pangea is one of a select few contractors who have met the criteria for acceptance into the PRIDE-OSHA program.
- In addition, Pangea was awarded an Excellence in Safety



Providing Safe Operations and
Quality Construction
Since 1994
Certified 8A, MBE

8500 College Blvd – Suite 111
Overland Park, KS 66210

Voice – (913) 338-7183
Fax – (913) 338-7109
www.pangea-group.com
alt4ks@aol.com

Award from the St. Louis Associated General Contractors (AGC) for attainment of zero lost workday incidents in calendar year 2001. Pangea is eligible for this award for 2002.

Pangea attributes its safety success to a team effort of highly motivated and conscientious employees that make safety part of their daily job. Pangea uses a process involving daily activity hazard analysis and toolbox briefings that involves all project employees to integrate safety into the performance of each new task or phase of work. Employees also receive a jacket or other clothing as recognition of their stellar performance.

Engineering Facts and Trivia: Where did the expression "The Real McCoy" originate?

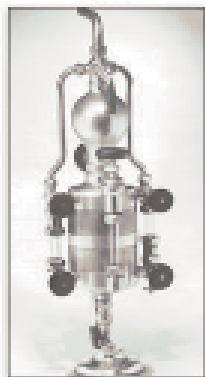
Elijah McCoy, 1843-1929

Automatic Machine Oiling-The Real McCoy

The lubricating cup, which made possible the automatic oiling of machinery, was invented by Elijah McCoy, the Canadian-born son of run-away slaves.



Educated in Scotland as a mechanical engineer, McCoy settled in Detroit on his return to the United States, and started experimenting with a cup that regulated the flow of oil onto moving parts of machines.



In 1872, he was granted a patent for the first automatic lubricator. No longer did machines have to be stopped for oiling; his new oiling device revolutionized the machine industry. McCoy established his own firm and obtained patents for additional inventions, such as an "ironing table" and a lawn sprinkler; however, his major contribution was the lubricating cup which was to become so popular that persons inspecting new equipment

generally asked if it contained the "real McCoy," meaning the McCoy oiling device. This helped popularize an American expression, meaning the "real thing."

2003 SAME Scholarship Program

By Paul Duffendack, HNTB

Our Post has for the last several years awarded scholarships to worthy students. Last year we awarded a record number of scholarships totaling \$20,000. Scholarships have ranged from \$1,000 to \$1,500. Students of all ages are eligible to submit applications to receive one of these scholarship grants. The applications must, however, be restricted to Post members and their immediate family, including children, spouses, grandchildren, nieces, and nephews. The scholarships can be used for any form of education including high school, college, or continuing adult education. The process is simple. If you are interested, fill out an application form which is available via our Post web page and forwarding the completed application by e-mail to Paul Duffendack at pduffendac@hntb.com or mail directly to:

Mr. Paul Duffendack, Chairman SAME Scholarship Committee, HNTB Corporation, 715 Kirk Drive, Kansas City, MO 64105

The completed applications must be received no later than February 28, 2003. The Scholarship Committee will review the applications and make scholarship awards by April 30, 2003. This program is another dividend of SAME membership. Please feel free to call Paul Duffendack at 816-472-1201 with any questions.

Lewis and Clark Bicentennial Commemoration

By George Hazel, JE Dunn Construction, Inc.

Things are beginning to heat up on the local portions of the upcoming Lewis & Clark Commemoration. Just recently the beginning of the commemoration occurred at the historic home of Thomas Jefferson who commissioned the expedition. Certainly everyone knows the expedition was an Army one—thus our interest in this event should be high as we reflect on the earliest of Army operations in the area we call home.

Kansas City is home to the only encampment site of the expedition in the immediate metropolitan area. Unfortunately over the years, this site, “Kaw Point” (on the Kansas side of the confluence of the Missouri and Kansas Rivers) has fallen into a state of disrepair and neglect.

If you’d like to connect with our Army roots, there’s ample opportunity to help the growing volunteer effort. By helping out in whatever way(s) you can, we pay respect to our forefathers, rehabilitate a historic site for the enjoyment of future generations, and ensure that Kansas City is not embarrassed when re-enactors trace the historic journey of these great pioneering Americans in June of 2004.

You can help out by contributing time, talent, and/or treasure to this cause. When it comes to treasure, the restoration committee is seeking about \$2 million to clean up the site and to rehabilitate some facilities and to create basic infrastructure (walkways, etc.) and interpretive features. Contributions can be made directly to: Friends of the Kaw, Inc., Wyandotte County Lewis & Clark Task Force, a 501(c)(3) organization at P.O. Box 171517 Kansas City, Kansas 66117-0517. The Task Force Chair is Shari Wilson at (913) 287-6879.

Better yet, if you’d like to make a contribution as a member of our great organization, please submit your contribution to our treasurer. We’ll make a consolidated contribution. As far as talent and time—there are ample opportunities. March 15th has been named a volunteer clean-up day at the site. Coordinate your participation by contacting Mike Calwell at the task force at 913-677-7752.

If you have questions or suggestions on how our organization can be brought to bear to help this effort in anyway, please contact George Hazel at (816) 460-2760. You also may visit the organization’s web site at www.lewisandclark.org.

Brain Teaser Answer

The two best distances are 100 yards (“the approach”) and 125 yards (“drive”). Hole 1 can be reached in three approaches, hole 2 in two drives, hole 3 in two approaches, hole 4 in two approaches and one drive, hole 5 in three drives and one backward approach, hole 6 in two drives and one approach, hole 7 in one drive and one approach, hole 8 in three drives, and hole 9 in four approaches = 26 strokes in all.

GBR Services

1885 N 100 Road
Baldwin City, KS 66006

Larry A. Janssen, Chief Operating Officer

Supporting Informed Decisions

Phone (785) 594-7549 Fax (785) 594-4832
E-mail janssenl@grapevine.net Mobile (785) 766-2978



Tetra Tech, Inc.

- Homeland Defense Projects
- Site Assessment and Remediation
- Stormwater Engineering
- Habitat Restoration
- NEPA/Wetlands Permitting
- Geotechnical Investigations

Ed Hubert, Operations Mgr.
8030 Flint Street
Lenexa, Kansas 66214
(913) 894-3660
(913) 894-6295 (fax)
Ed.Hubert@tetra.com
<http://www.tetra.com>

The Highest Quality Environmental & Marine Services

- Remediation/Construction
- Sediment Dredging & Processing
- Marine Construction, Repair, & Inspection
- Ecosystem Restoration
- 24/7 Immediate & Rapid Response
- Tank & Equipment Cleaning
- Vacuum Truck Services

www.baywest.com
St. Paul, MN
Kansas City, KS
St. Louis, MO
Lafayette, LA



Bay West, Inc.

Environmental & Marine Services

Advertise in the Newsletter

By Phil Dula, Bay West/KC Post Newsletter Editor

As Editor of our Newsletter I would like to thank **Bay West, Pangea, Haz-Mat Response Disposal, Inc., HDR, HydroGeologic, GBR, URS, and Tetra Tech** for their support of the Post newsletter. Their support is greatly appreciated as the advertising fee of \$30 per issue is used to support our web page development, meeting announcement mailing costs, and to supplement our scholarship fund. We still have available advertising space for upcoming issues so please show your support and sign up for the April /May 2003. Your business card type advertisement could be included at nominal cost of \$30.00 per issue or at a discounted price of \$150.00 if your firm signs up for 6 issues. Contact Phil Dula at phild@baywest.com or (913)-663-2915 if you wish to take advantage of this opportunity.